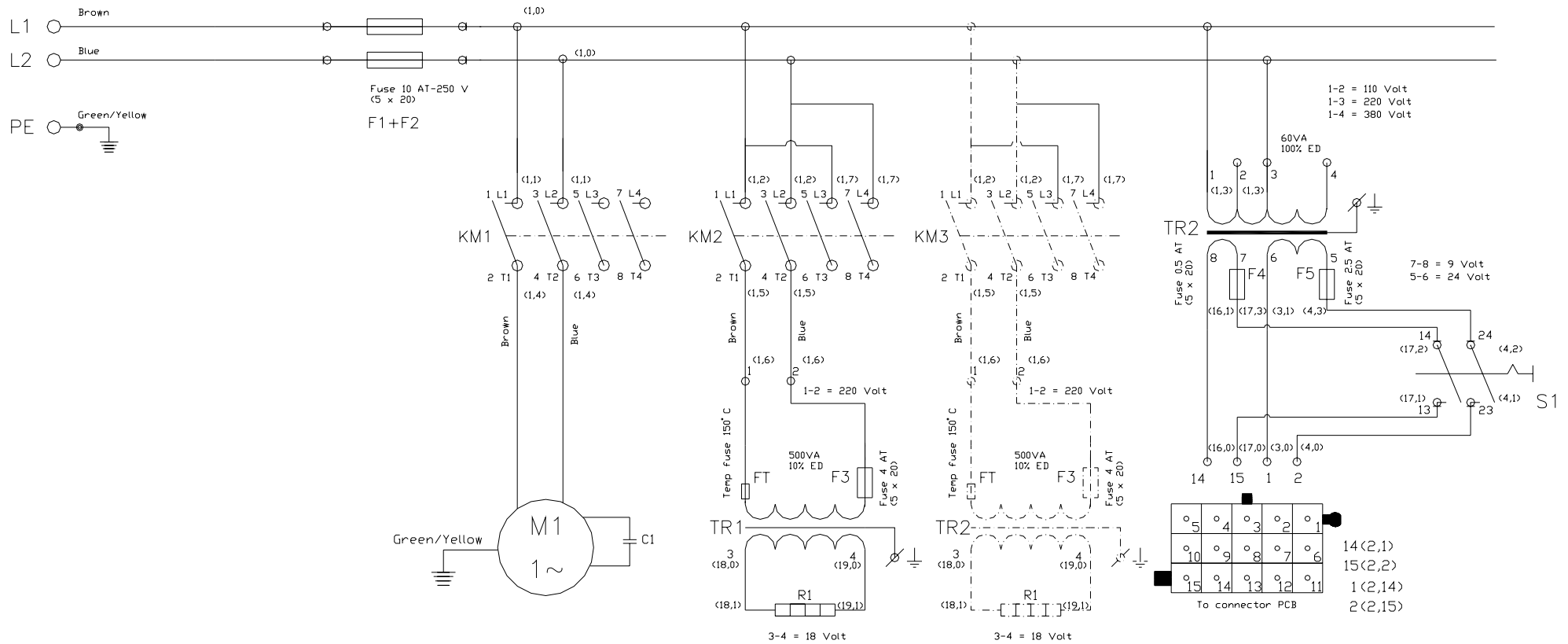


1	2	3	4	5	6	7	8
MAIN_SUPPLY		MAIN_FUSES	CONTACTOR_PUMP	CONTACTOR_SEAL	CONTACTOR_SEAL-2	CONTROLE_TRANSFORMER	POWER_SWITCH
L1_L2		F1+F2	K1	K2	K3	TR2	S1
			MOTOR	SEALTRANSFORMER	SEALTRANSFORMER	MAIN_CONNECTOR_PC_BOARD	
			M1	TR1	TR2		



H				Datum	Naam
G			Getek.	06.06.04	MD
F			Gecon.		
E			Type:	TABLEMODEL_D	
D			Span.	230	V
C			Fasen	1	~
B			Freq.	50	Hz
A			Tolerantie op vrije maten		
REV	Revisie	Datum	Ini.	volgens DIN 7168 : m	

Benaming:
 CONNECTION_DIAGRAM_TABLE_MODEL
 MAIN_POWER_SUPPLY

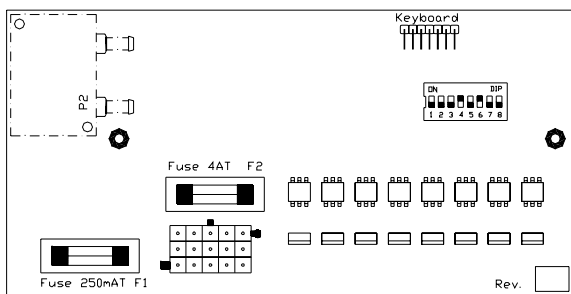
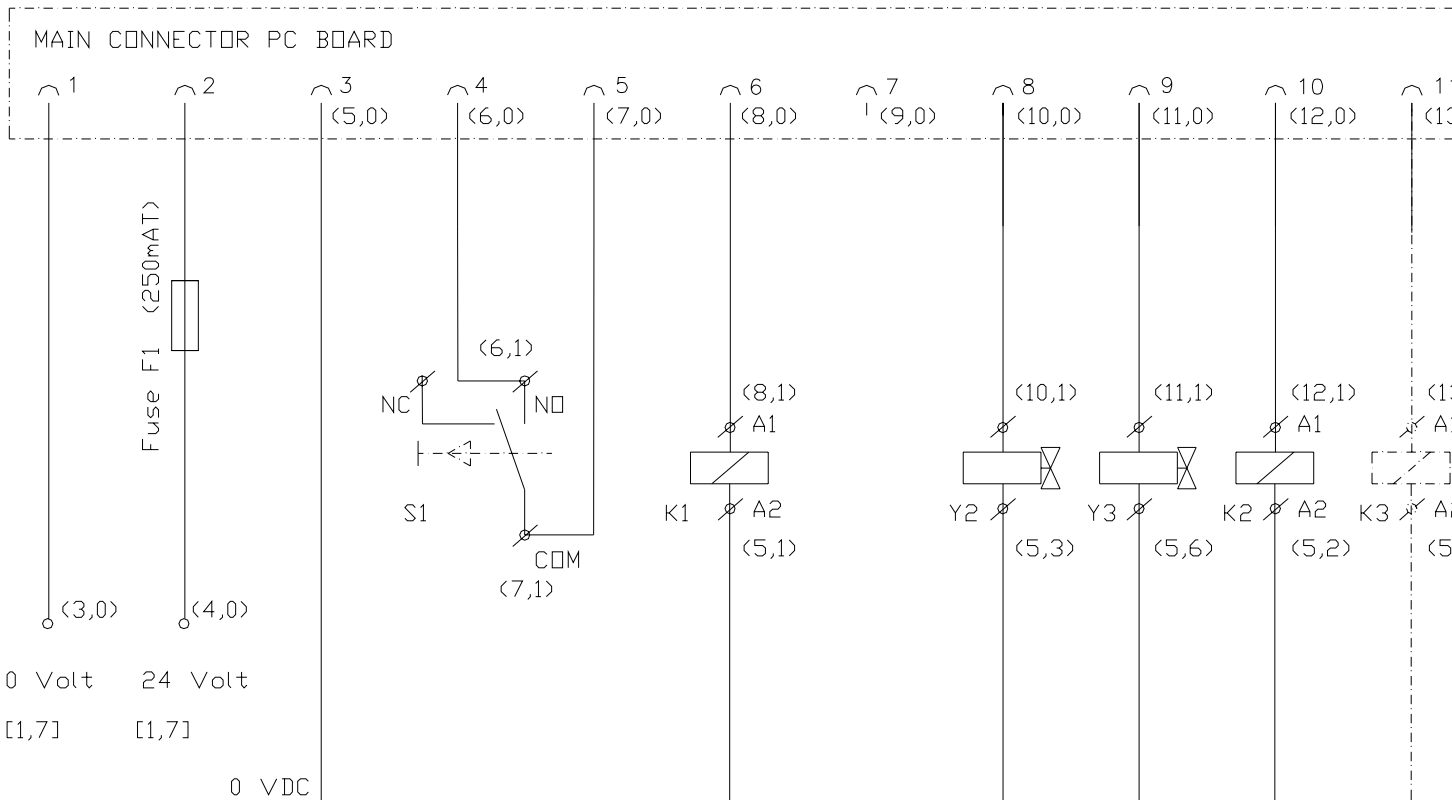
Tekening nummer:
 PAGE_1-2

Artikel nummer:
 TD-1-230-1

Vervang. van: _____ Verval. voor: _____



1	2	3	4	5	6	7	8	9	10	11
INPUT	INPUT	COM	MICROSWITCH		PUMP		GAS	SEAL	SEAL	SEAL-2
0_VOLT	24_VOLT				CONTACTOR		VALVE	VALVE	CONTACTOR	CONTACTOR
	FUSE_F1				K1		Y2	Y3	K2	K3

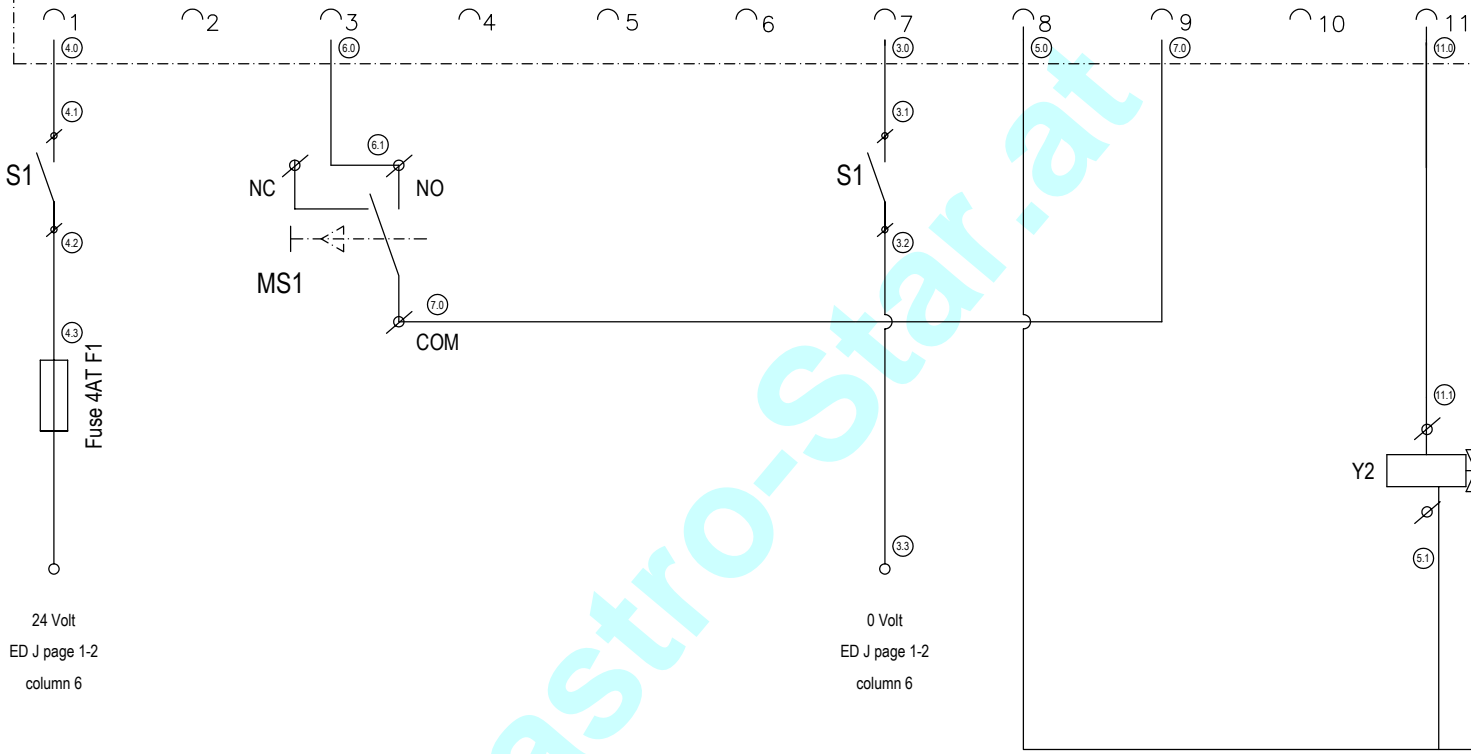


H				Datum	Naam	Benam
G				Getek.	06.06.04	MD
F				Gecon.		
E				Type:	TABLE_MODEL_D	
D				Span.	24/9	V
C				Fasen	1	~
B				Freq.	50	Hz
A				Tolerantie op vrije maten volgens DIN 7168 : m		
REV	Revisie	Datum	Ini.			



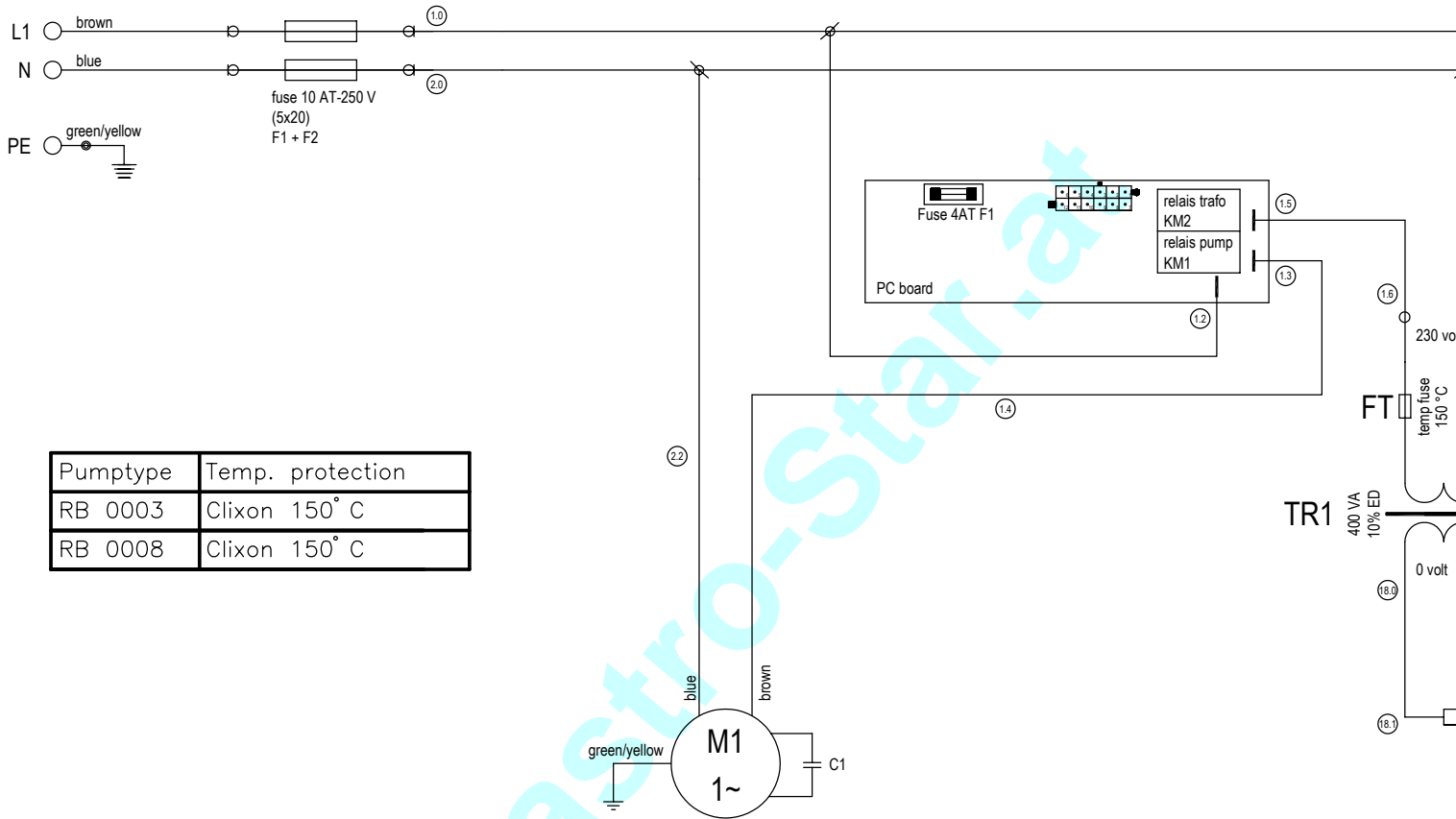
1	2	3	4	5	6	7	8	9	10	11
input		microswitch			www.Gastro-Star.at	input	com	microswitch		seal
24 volt		NO				0 volt		com		valve
fuse F1		microswitch				input	com	microswitch		Y2
switch		MS1				switch				
S1						S1				

main connector PC board



Input output
2-2
MD
06-2004
A

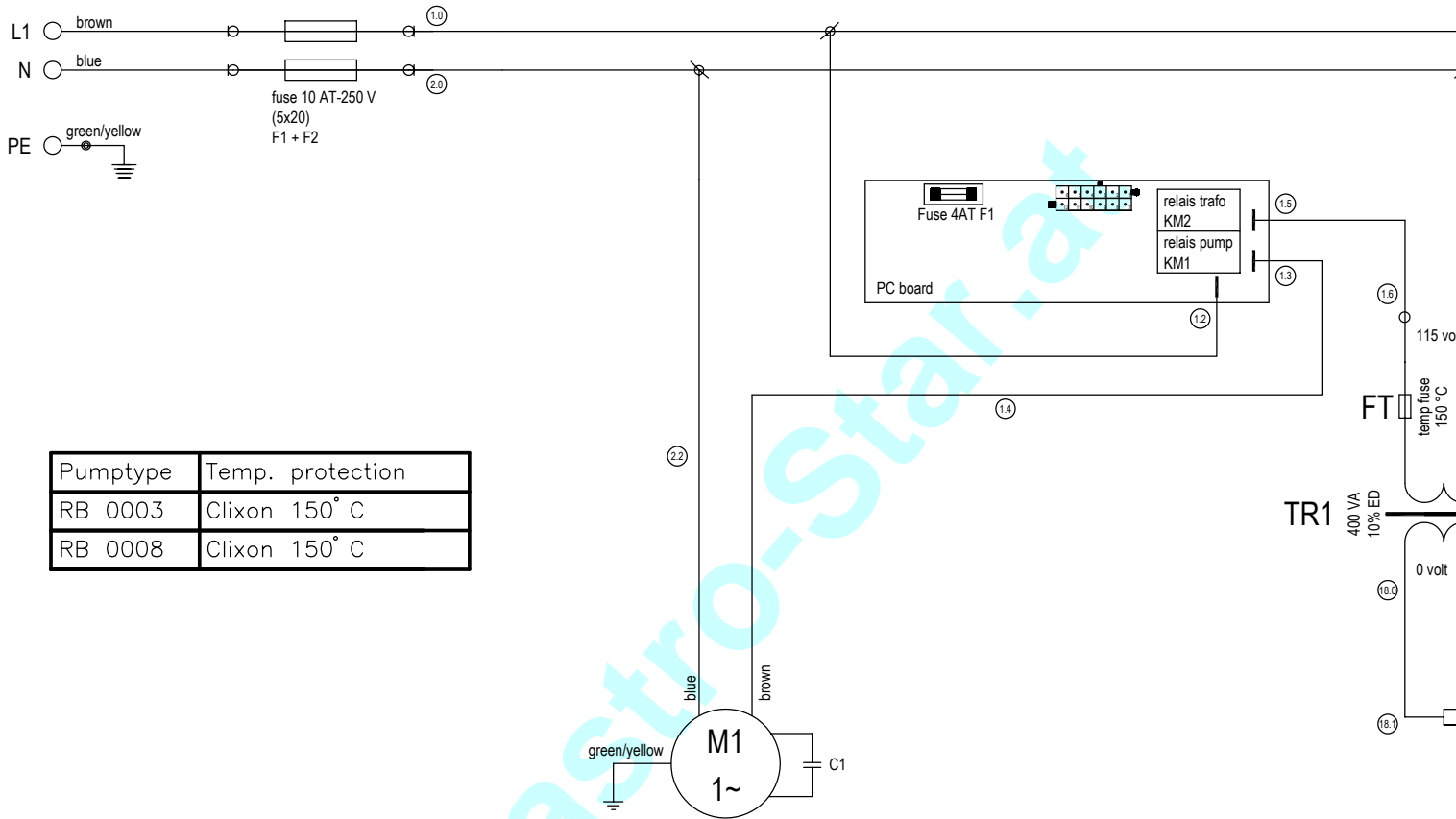
1	2	3	4	5
main supply	main fuse	motor www.Gastro-Star.at	main power supply for PCB	sealtransfo
L1 N	F1	M1	"FASE"	TR1
			power supply for pump	sealbar
			"POMP"	R1
			power supply for seal transformer	
			"TRAFO"	



Pumptype	Temp. protection
RB 0003	Clixon 150° C
RB 0008	Clixon 150° C

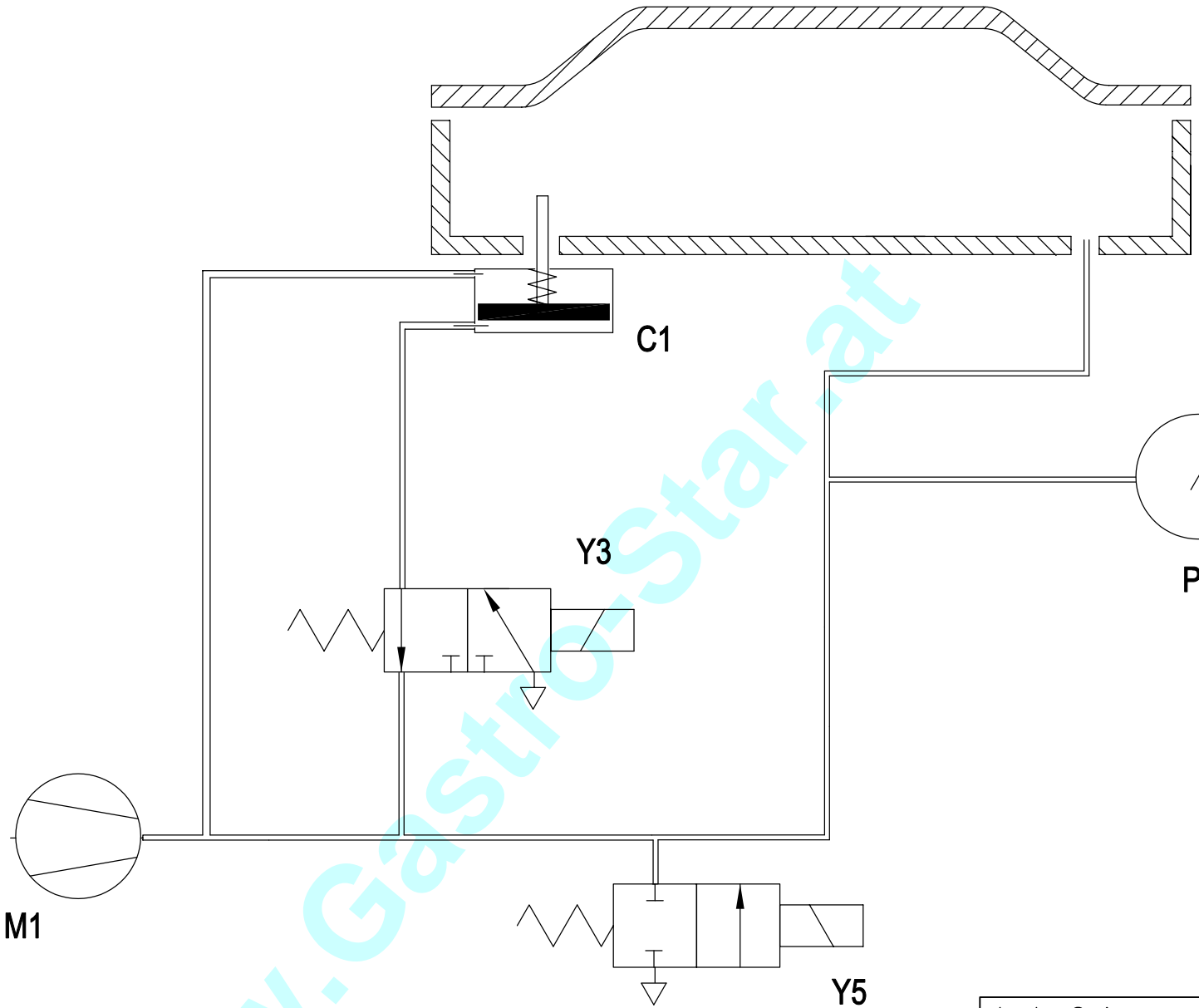
Main power supply
1-2
MD
06-2004
A

1	2	3	4	5
main supply	main fuse	motor www.Gastro-Star.at	main power supply for PCB	sealtransfo
L1 N	F1	M1	"FASE"	TR1
			power supply for pump	sealbar
			"POMP"	R1
			power supply for seal transformer	
			"TRAFO"	



Pumptype	Temp. protection
RB 0003	Clixon 150° C
RB 0008	Clixon 150° C

Main power supply
1-2
MD
06-2004
A



Jumbo Series
1-1
MD
06-2004

main switch

www.Gastro-Star.at

C1 micro switch (input)

U1 pump contactor (output)

U2 seal valve (output)

U3 seal contactor (output)

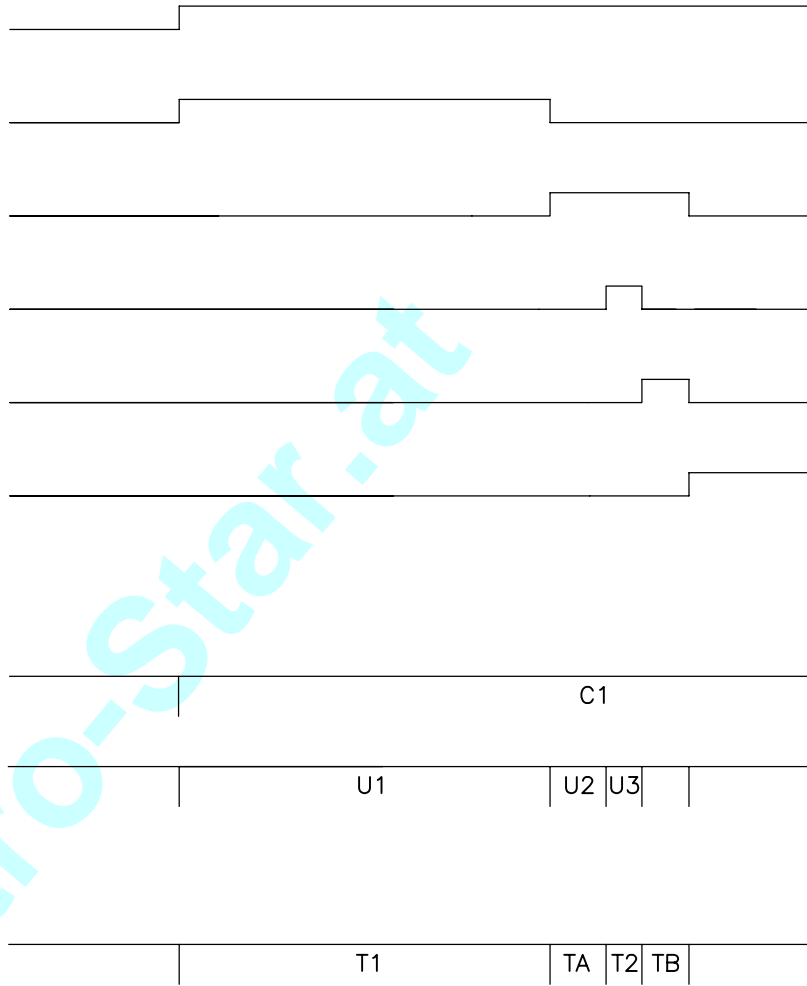
cooling time

U4 de-vac valve (output)

C input

U output

T timers



T1 = vacuum time (2–99s variable)

T2 = seal time (0,5–6s variable)

TA = pre-seal time (1s fixed)

TB = cool time (3s fixed)

Function time diagram
1–1
MD
06–2004

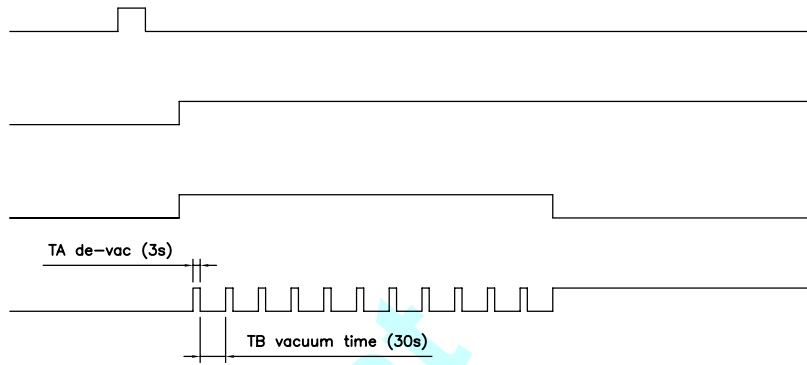
main switch

K1 conditioning select

C1 micro switch (input)

U1 pump contactor (output)

U2 de-vac valve (output)



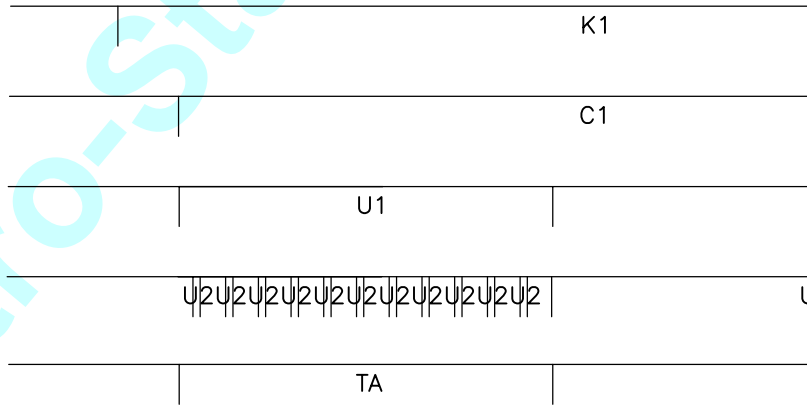
K "C" button keyboard

C input

U output

U output

T timers



TA = conditioning time (15min)

TB = vacuum time (30s)

TC = de-vac time (3s)

Function time diagram
1-1
MD
06-2004

www.Gastro-Star.at